

**DOCUMENT 00 90 00
ADDENDUM**

ADDENDUM NO. [1] Date: July 9, 2021

**RE: LA CROSSE HOUSING AUTHORITY
2021 CAPITAL IMPROVEMENT PROJECTS
LA CROSSE, WI
HSR PROJECT NO. 21016**

FROM: HSR Associates, Inc
100 Milwaukee Street
La Crosse, WI 54603
(608) 784-1830

To: Prospective Bidders

This addendum forms a part of the Contract Documents and modifies the original Bidding Documents dated June 2021. Acknowledge receipt of this Addendum in the space provided on the bid form. Failure to do so may subject the Bidder to disqualification.

This Addendum consists of [1] page, and [2] 30 x 42 drawings.

CHANGES TO BIDDING REQUIREMENTS AND CONDITIONS OF THE CONTRACT:

1. Pre-Bid Meeting Sign-In Sheet – Attached Hereto
2. Advertisement for Bids
 - a. Add the following sentence to the general statement of project work at Stokke Tower:
“Electrical work includes removal and reinstallation of an existing light fixture.”
 - b. Add the following sentence to the general statement of project work at Sauber Manor:
“Electrical work includes removal and replacement of light fixtures in the community room and community room kitchen.”

CHANGES TO DRAWINGS

3. Sheet E300 LIGHTING PLAN (Sauber Manor)
 - a. Revised notes to provide fixture replacement counts and locations.
 - b. Revised plan detail 2 to show fixture replacements in the community room and kitchen.
4. Sheet E800 LIGHTING PLAN (Stoffel Court)
 - a. Revised notes to remove the reference to firestopping.
 - b. Revised key notes and key note callouts to clarify required fixtures.

END OF DOCUMENT 00 90 00

Page Intentionally Left Blank



ARCHITECTURE
ENGINEERING
INTERIOR DESIGN

HSR Associates

Celebrating 65 Years of Innovative Design

Pre-Bid Meeting Sign-In Sheet

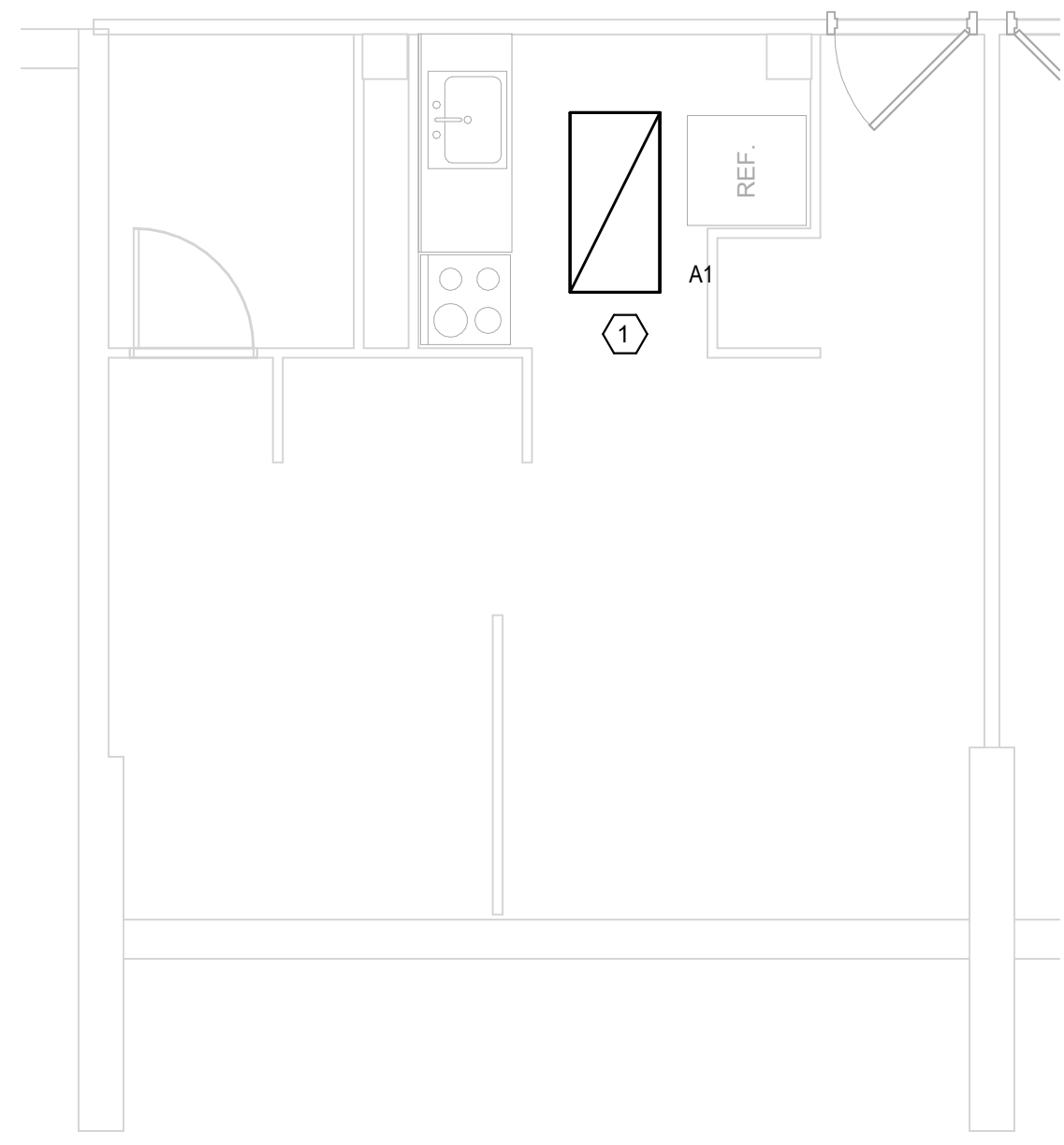
June 30, 2021

**PROJECT: LA CROSSE HOUSING AUTHORITY
2021 CAPITAL IMPROVEMENT PROJECTS
LA CROSSE, WI
HSR 21016**

BID OPENING: 2:00 PM, July 22, 2021

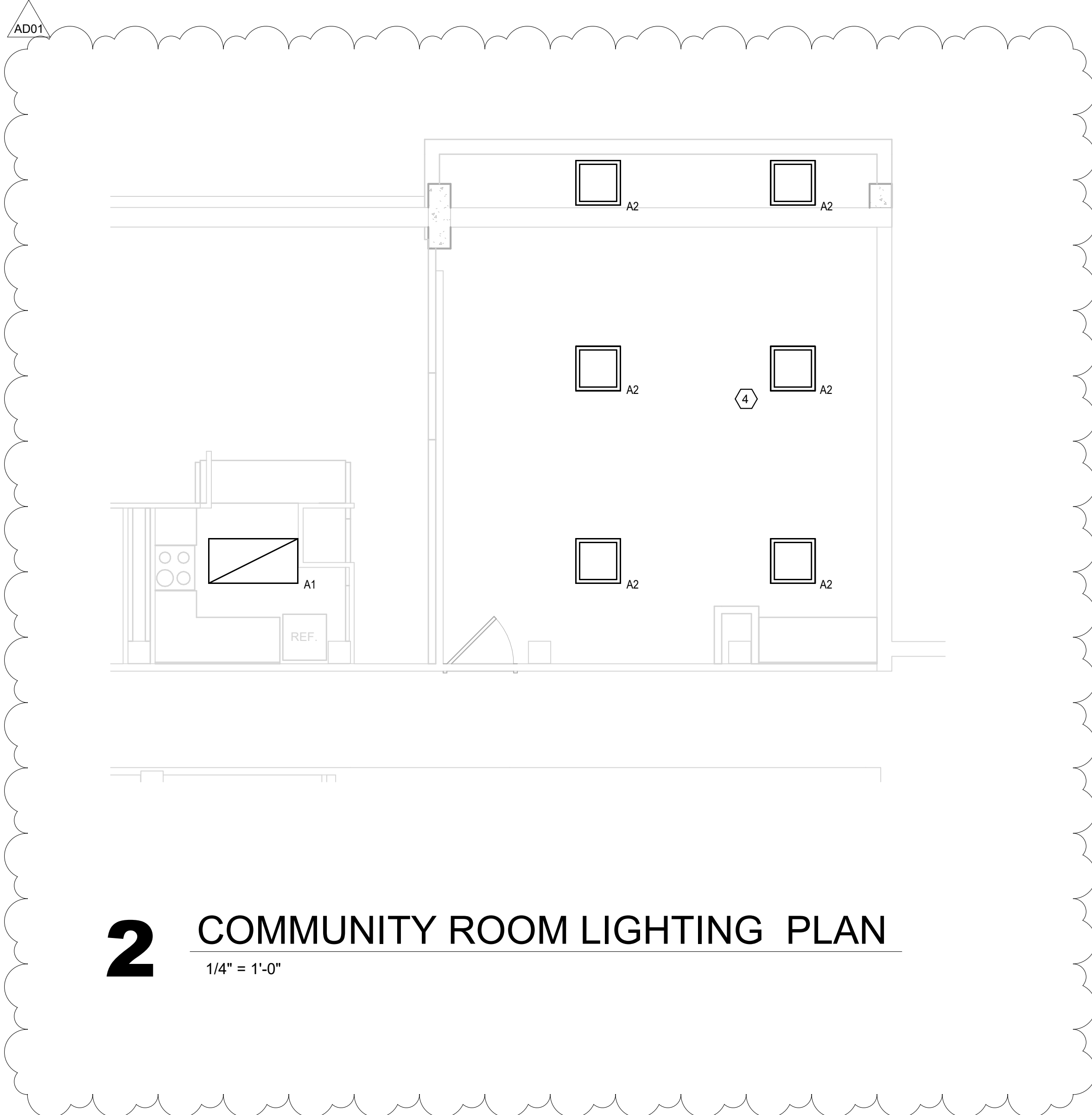
Name	Company
1. Doug Ramsey	HSR
2. Mike Lorenz	HSR
3. Tobin Fauchoux	HSR
4. Jeremy Gunderson	LHA
5. Steve Schauf	LHA
6.	
7.	
8.	
9.	
10.	
11.	
12.	
13.	
14.	
15.	
16.	
17.	
18.	
19.	
20.	

Page Intentionally Left Blank



1 TYPICAL BEDROOM UNIT RECESSED FIXTURE

1/4" = 1'-0"



2 COMMUNITY ROOM LIGHTING PLAN

1/4" = 1'-0"

ELECTRICAL SYMBOLS

- RECESSED CEILING MOUNTED LIGHTING FIXTURE
 - CIRCUIT SWITCH LEG. NO DESIGNATION INDICATES PORTION OF CIRCUIT SWITCHED FROM LOCAL SWITCH OR OCCUPANCY SENSOR.
 - FIXTURE DESIGNATION (SEE SCHEDULE)
 - CIRCUIT NUMBER.
- LIGHTING FIXTURE (2x4) - RECESSED * A1
- LIGHTING FIXTURE (2x2) - SURFACE* A2
- SINGLE POLE SWITCH - TOGGLE TYPE - MOUNT AT 48" AFF. UNLESS NOTED OTHERWISE
 - SWITCH DESIGNATION
 - SWITCH TYPE
 - (3) 3 WAY
 - (4) 4 WAY
 - (OC) OCCUPANCY SENSOR
 - (K) KEY SWITCH
 - (D) DIMMER
- PANELBOARD, TERMINAL CABINET
- JUNCTION BOX OR PULL BOX
- GROUND CONNECTION
- LEG TO PANEL
- NOTE NUMBER (REMODEL)

* TYPE AS INDICATED WITH LETTER/NUMBER, REFER TO SPECIFICATIONS OR SCHEDULES.
 ** QUANTITIES OF CABLE DROPS AS INDICATED WITH NUMBER, REFER TO DRAWINGS, HEIGHTS AND LOCATIONS AS INDICATED ON DRAWINGS.
 *** NUMBER REFERS TO LOW VOLTAGE LIGHTING RELAY, REFER TO SCHEDULE.

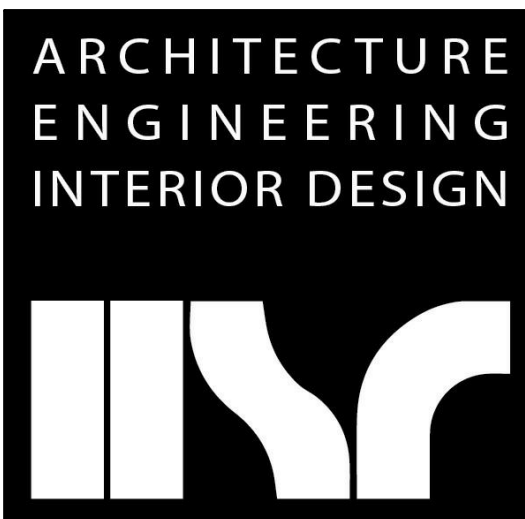
GENERAL NOTES :

A PROVIDE GROUND CONDUCTOR IN ALL RACEWAYS.
 B THE WORD "PROVIDE" MEANS TO FURNISH AND INSTALL.
 C NOTE: 82 UNITS IN TOTAL. ONE AND TWO BEDROOM APARTMENT UNITS HAVE THE SAME 'A1' LIGHT FIXTURE ORIENTATION.
 D NOTE: 83 UNITS IN TOTAL. ELECTRICAL CONTRACTOR TO VERIFY COUNT OF 2x4 RECESSED 'A1' LIGHT FIXTURES.
 E NOTE: 6 UNITS IN TOTAL. ELECTRICAL CONTRACTOR TO VERIFY COUNT OF 2x2 SURFACE FIXTURES TO BE REPLACED BY TYPE 'A2' AND 1 UNIT IN TOTAL OF 2x4 RECESSED 'A1' LIGHT FIXTURE TO BE REPLACED ALL LOCATED ON THE 8TH FLOOR COMMUNITY ROOM.

KEY NOTES :

- REPLACE EXISTING FLORESCENT RECESSED FIXTURE WITH NEW LED RECESSED FIXTURE TYPE 'A1' REUSE EXISTING BRANCH CIRCUIT AND SWITCH LEG.
- REPLACE EXISTING FLORESCENT SURFACE WRAPAROUND WITH NEW LED SURFACE WRAPAROUND FIXTURE TYPE 'B' REUSE EXISTING BRANCH CIRCUIT AND SWITCH LEG.
- REPLACE EXISTING FLORESCENT SURFACE UNDER CABINET WITH NEW LED SURFACE UNDER CABINET FIXTURE TYPE 'C' REUSE EXISTING BRANCH CIRCUIT AND SWITCH LEG.
- REPLACE EXISTING FLORESCENT SURFACE FIXTURE WITH NEW LED SURFACE FIXTURE TYPE 'A2' REUSE EXISTING BRANCH CIRCUIT AND SWITCH LEG.

LIGHT FIXTURE SCHEDULE				
MARK NO.	MANUFACTURE	CATALOG	DESCRIPTION	REMARKS
A1	LITHONIA	2GTL F 4 40L GZ10 LP835 DGA24	2X4 LED RECESSED TROFFER	DRY WALL
A2	LITHONIA	2GTL F 2 40L GZ10 LP835 2X2SMKSH PAF	2X2 LED SURFACE TROFFER	SURFACE MOUNT



HSR ASSOCIATES INC.
 100 MILWAUKEE STREET
 LA CROSSE, WISCONSIN
 PHONE: 608.784.1830
 FAX: 608.782.5844
 www.hsrassociates.com

Consultant:

HOUSING AUTHORITY OF THE CITY OF LA CROSSE
 2021 CAPITAL IMPROVEMNET PROJECTS -SAUBER
 MANOR
 Project Location: 1033 LIBERTY STREET
 LA CROSSE, WI 54603
 LIGHTING PLAN

Project Title:
 HSR Project Number:
 Project Date:
 Drawn By:

21016
 JUNE 2021
 CRANDALL

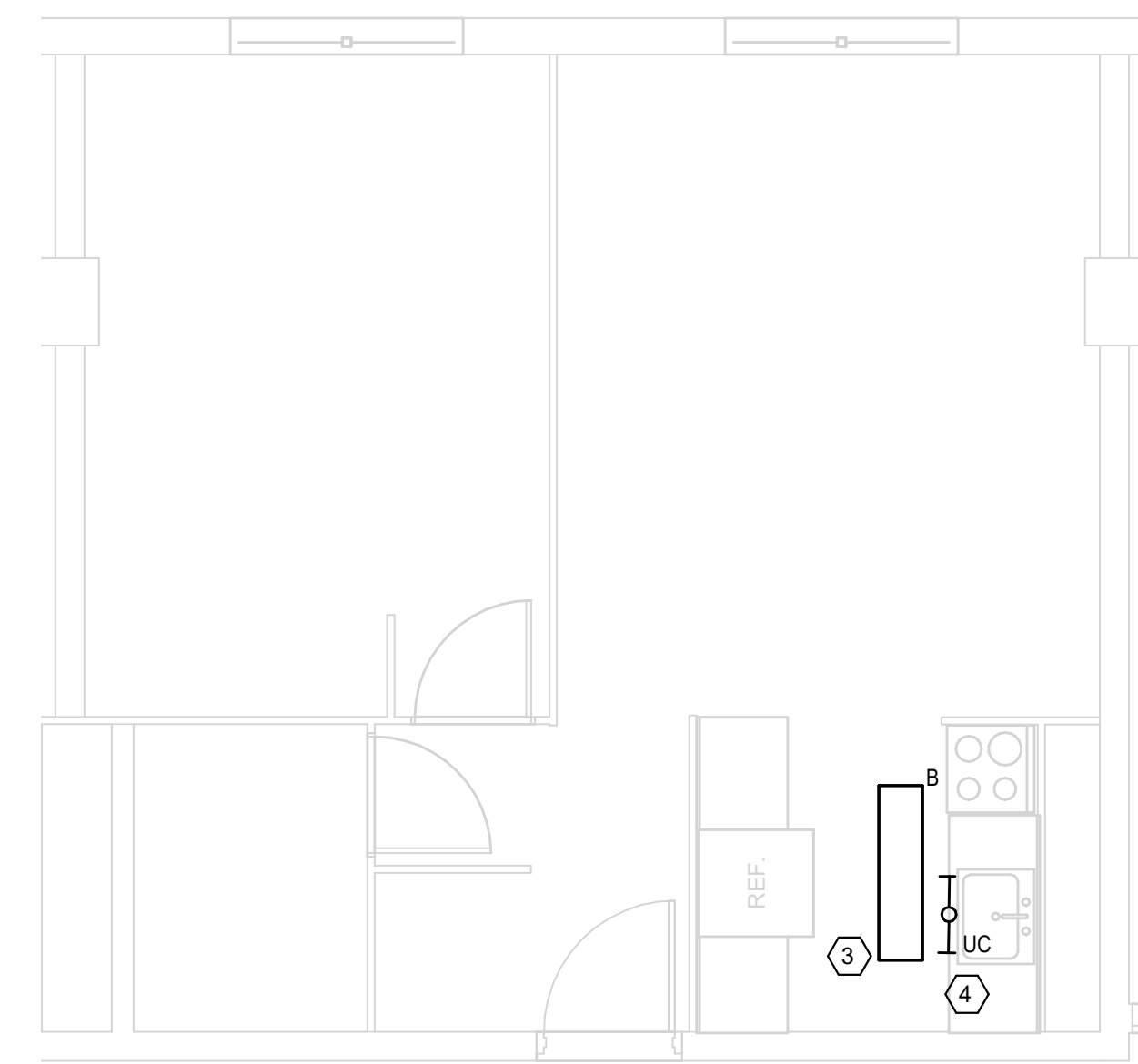
Key Plan:

Revisions:

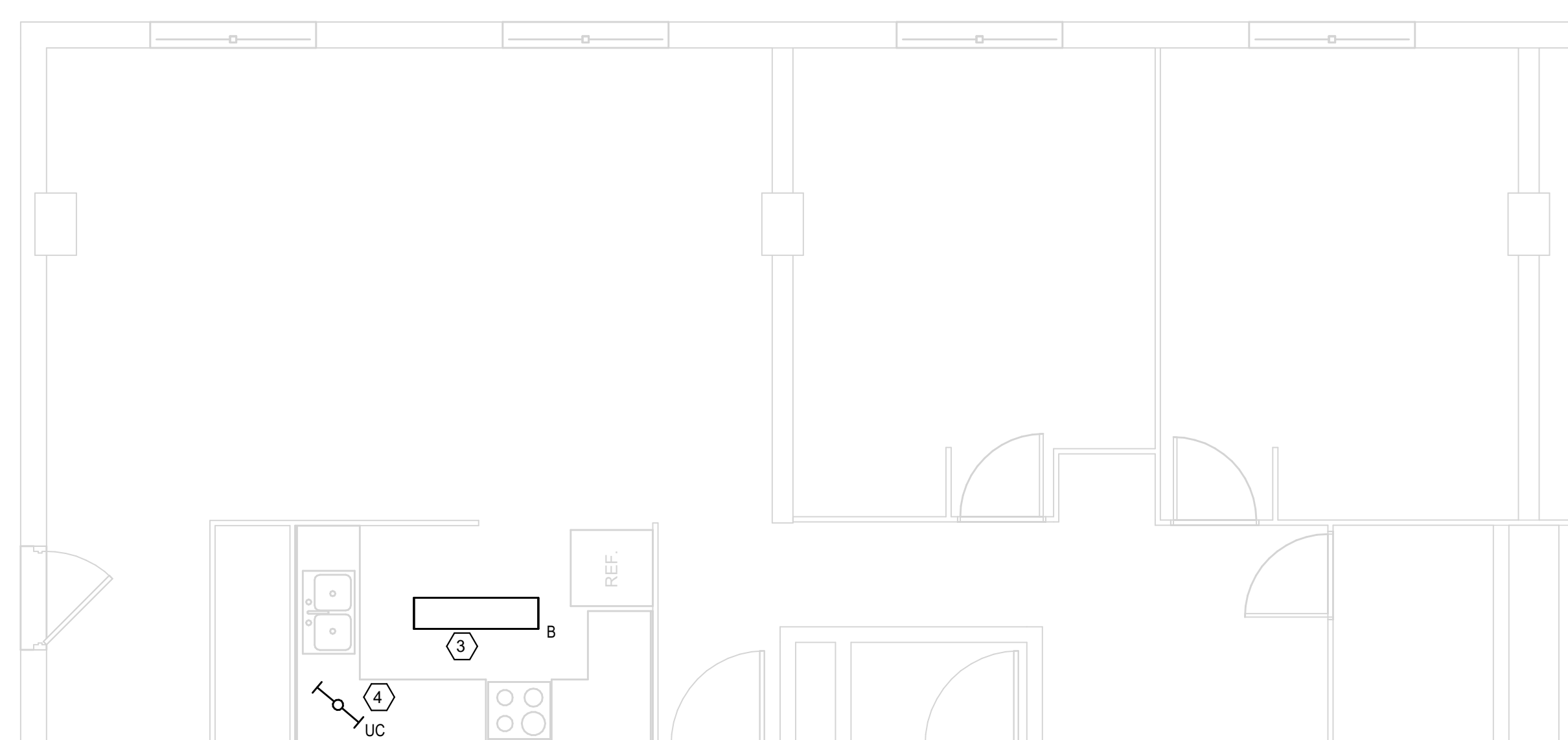
No.	Description	Date
ADD01	Addendum 01	2021JUL09

Graphic Scale:
 0 1' 2' 4' 6'
 Last Update:
 7/9/2021 11:21:10 AM

E300



1 TYPICAL ONE BEDROOM LIGHTING LAYOUT
1/4" = 1'-0"



2 TYPICAL TWO BEDROOM LIGHTING LAYOUT
1/4" = 1'-0"

ELECTRICAL SYMBOLS

RECESSED CEILING MOUNTED LIGHTING FIXTURE
 LIGHTING FIXTURE (1'x4') - SURFACE * B
 LIGHTING FIXTURE - UNDER CABINET * UC
 SINGLE POLE SWITCH - TOGGLE TYPE - MOUNT AT 46" AFF. UNLESS NOTED OTHERWISE
 SWITCH DESIGNATION (3) 3 WAY
 SWITCH TYPE (4) 4 WAY
 SWITCH DESIGNATION (OC) OCCUPANCY SENSOR
 SWITCH TYPE (K) KEY SWITCH
 SWITCH TYPE (D) DIMMER
 PANELBOARD, TERMINAL CABINET
 JUNCTION BOX OR PULL BOX
 GROUND CONNECTION
 LEG TO PANEL
 NOTE NUMBER (REMODEL)

* TYPE AS INDICATED WITH LETTER/NUMBER, REFER TO SPECIFICATIONS OR SCHEDULES.
 ** QUANTITIES OF CABLE DROPS AS INDICATED WITH NUMBER, REFER TO DRAWINGS, HEIGHTS AND LOCATIONS AS INDICATED ON DRAWINGS.
 *** NUMBER REFERS TO LOW VOLTAGE LIGHTING RELAY, REFER TO SCHEDULE.

GENERAL NOTES :

A PROVIDE GROUND CONDUCTOR IN ALL RACEWAYS.
 B THE WORD "PROVIDE" MEANS TO FURNISH AND INSTALL.
 C NOTE: 75 UNITS IN TOTAL ONE AND TWO BEDROOM APARTMENT UNITS HAVE THE SAME 'B' LIGHT FIXTURE ORIENTATION.
 D NOTE: 75 UNITS IN TOTAL ONE AND TWO BEDROOM APARTMENT UNITS HAVE THE SAME 'UC' LIGHT FIXTURE ORIENTATION.

KEY NOTES : (#)

- REPLACE EXISTING FLORESCENT RECESSED FIXTURE WITH NEW LED RECESSED FIXTURE TYPE 'A1' REUSE EXISTING BRANCH CIRCUIT AND SWITCH LEG.
- REPLACE EXISTING FLORESCENT SURFACE WRAPAROUND WITH NEW LED SURFACE WRAPAROUND FIXTURE TYPE 'B' REUSE EXISTING BRANCH CIRCUIT AND SWITCH LEG.
- REPLACE EXISTING FLORESCENT SURFACE UNDER CABINET WITH NEW LED SURFACE UNDER CABINET FIXTURE TYPE 'UC' REUSE EXISTING BRANCH CIRCUIT AND SWITCH LEG.
- REPLACE EXISTING FLORESCENT SURFACE FIXTURE WITH NEW LED SURFACE FIXTURE TYPE 'A3' REUSE EXISTING BRANCH CIRCUIT AND SWITCH LEG.

LIGHT FIXTURE SCHEDULE				
MARK NO.	MANUFACTURE	CATALOG	DESCRIPTION	REMARKS
UC	LITHONIA	UCEL 24 30K 90CRI WH	UNDERCABINET LED SURFACE	SURFACE MOUNT
B	LITHONIA	SBL4000LM 80CRI 35KMIN10GTZ MVOLT	1X4 LED SURFACE WRAP AROUND	SURFACE MOUNT